

SASHA

Personal statement

I have a friendly outgoing personality. I enjoy working as part of a team .I am equally happy working alone. I am a people's person. I can converse at all levels. I am an intelligent, articulate communicator, punctual and always happy. I am a hard worker and I am dedicated and positive about every job role I am given. I am a quick learner and welcome any new challenge!

Statistics

Height: 5ft6

Bust:32C

Waist:24

Hips:35

Dress size:8

Shoe:6

Skills

- Exhibitions and Trade Shows Public and B2B,
- Excellent Approach, Invite ,Engage, Inform, Persuade, Retain,
- Introduce, Data Capture Skills
- Quickly learn any product and client brief and deliver .
- Product Sampling/Selling
- Demonstrator/Sales
- Corporate and Exhibition Hospitality
- Direct Product Sales
- Product /Service Launches and promotions
- Venue/Store Launches and Promotions
- Field Campaigns, Data Capture
- Experiential campaigns and promotions
- FMCG, Products and Services
- Targeted Sales Lead Generating/Appointment Making
- Brand awareness and leafleting campaigns and promotions

Continued next page



Contact us today if you would like Sasha to represent your business

Work Experience

NEC- Engineering show: Hospitality/hostess (Sheilling)

NEC- Clothes Show Live- Schwarzkopf- model/promotional

Toni and Guy Hair show- Promotional

NEC- Commercial Vehicle Show

Photographic work for South Beach/ Lipsy

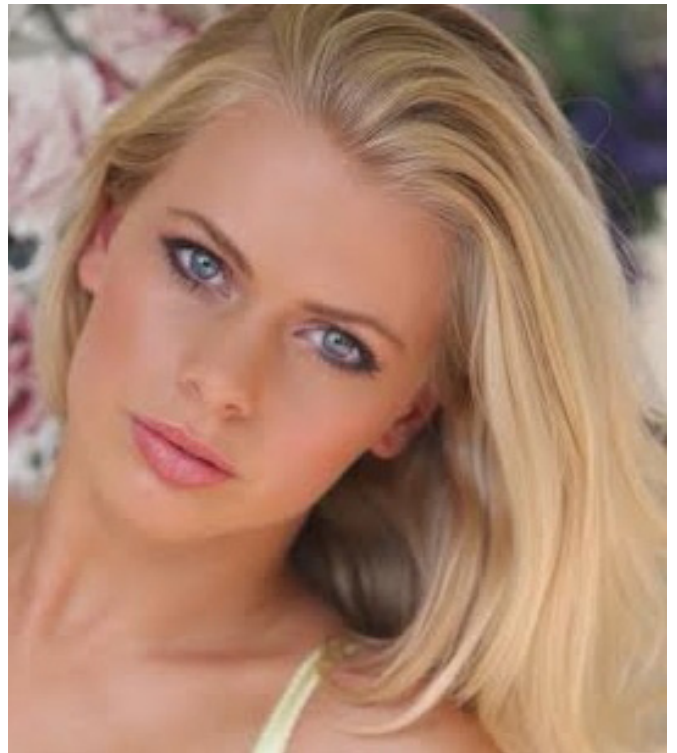
TV extra work- walk on role: Hollyoaks

Photographic and in store promotions/sales work for Magnitone skincare

Leafleting and Promotion- MAC cosmetics

Michael kors part-time sales associate- retail experience in sales, customer service, merchandising, computer till skills and recruiting, cash and stock controls and personal shopping experience. Also exceeding all of my sales targets week after week.

Self employed Beauty Therapist- including nail technician, spray tanning, make-up artist and massage. I have built up a strong customer base, successfully marketed through social media networking.



Education:

11 GCSE's:

Lichfield Cathedral School

Maths-B

Physics-B

R.E-B

Drama-A*

Biology-B

Spanish-A

English (literature and language)-A

Design Technology-A

Business Studies-A*

Chemistry-B

