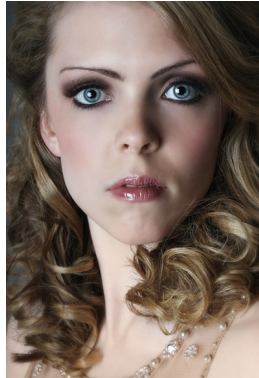


LYNNE



Personal statement

I am a keen and confident actress and model with an abundance of experience in promotions and events. I have worked for a large variety of high profile clients, and have been in the industry for over a year. High energy, confident, bubbly and most importantly reliable, I am the perfect candidate to represent any business'

Statistics

Height: 5' 8.5" Chest: 32C
Dress size: 8 Inside Leg: 33"
Shoe size: 5 Hips: 33"
Waist: 25" Manchester based.

Skills

Instruments

Grade 8 Voice (classically trained mezzo soprano), Grade 7 Flute and violin, Grade 4 piano, Dance, Grade 6 Ballet, Tap, Modern and Theatre Craft. Performing experience with 'Mariyka's Dance Studios' (Shows, events and cabaret performances).
Driving Full clean UK driving license.

Societies

2010 Member of Opera 74: mezzo-soprano chorus singer.
2009 Member of the Cambridge RAG fashion team: Organised charity catwalk shows.
2007-2009 Member of Homerton College Choir and Orchestra at Cambridge University.

- Exhibitions and Trade Shows Public and B2B
- Excellent Approach, Invite, Engage, Inform, Persuade, Retain, Introduce, Data Capture Skills
- Quickly learn any product and client brief and deliver.
- Product Sampling/Selling
- Demonstrator/Sales
- Corporate and Exhibition Hospitality
- Direct Product Sales
- Product /Service Launches and promotions
- Venue/Store Launches and Promotions
- Field Campaigns, Data Capture
- Experiential campaigns and promotions
- FMCG, Products and Services
- Targeted Sales Lead Generating/Appointment Making
- Brand awareness and leafleting campaigns and promotions
- P R and Publicity Campaigns

Work Experience

Most Recent Opera And Musical Theatre Work (First Production: June 2006)

| Year | Role | Production, Director and Company |
|------|--------------|--|
| 2011 | Solo | Friends Opera Concert, Pamela Heywood, Opera 74 |
| 2011 | Chorus | Gala Concert with Brighthouse and Rastrick brass band Paul Witkiewicz Opera 74 |
| 2011 | Solo recital | Valentines Concert, George Hubbert, Opera 74 |
| 2010 | Chorus | Amahl and the Night Visitors, Paul Witkiewicz, Opera 74 |
| 2010 | First alto | The Wedding, Katherine Wilde SOAP |

Most Recent Film And Television Work (First Professional Job: October 2005)

| Year | Role | Production, Director and Company |
|------|------|----------------------------------|
|------|------|----------------------------------|

Continued page 2

Contact us today if you would like Lynne to represent your business

| | | |
|------|-------------|---|
| 2011 | Girlfriend | Old yellow photographs, Jonathan Turner, Joel Sarakula |
| 2011 | Presenter | Phoenix TV, Neil Morris, Manchester Phoenix |
| 2011 | Interviewer | Phoenix Rocks-Internet, Neil Morris, Manchester Phoenix |
| 2010 | Main Artist | You Take Me Higher, Jonathan Turner, Bolton University |
| 2010 | Background | Captain America Joe Johnson, Vita Ray |

Most Recent Theatre Work (First Production: June 2004)

| Year | Role | Production | Director | Company |
|------|-----------|---------------------------|-------------|--------------------------------|
| 2009 | Various | Submerge | Co-directed | Telltale Productions |
| 2007 | Old Woman | The Visit Mrs Sowerby | | Bolton School |
| 2007 | Helena | A Midsummer Night's Dream | | Mrs Sowerby Bolton School |
| 2005 | Mabel | Scenes From the Edge | Co-directed | Octagon Theatre |
| 2004 | Chorus | The Big Room | | Mandy Precious Octagon Theatre |

Most Recent Promotional Work (First Job: August 2010)

| Year | Type | Clients |
|-----------|---|--|
| 2011 | Mystery Shopping | British American Tobacco |
| 2011 | Data Capture | Bet 188 |
| 2011 | Team Leader | Flight centre |
| 2010-2011 | Sampling | Flora, Kelloggs, Sanex shower gel, Celebrity Slim bars, Galaxy, Wilkinsons |
| 2010-2011 | Brand- Ambassador | 20:20 cricket, The denim Surgery Event, Mastercard, o2, Andrex, Size trainers, Barburritos, Topshop, Cheshire Oaks, Waitrose |
| 2010-2011 | Sales | Une Make-up, Clairrol hair colour, Gillette, Adidas, Nivea, British American Tobacco |
| 2010-2011 | Demonstrator | Nip+Fab, Batisse, Movie Booth |
| 2010-2011 | Model and Hostess | Compass charity golf event, Stoli vodka, LARAC conference, Marlboro. |
| 2010-2011 | Flying Coral, Cool Trader, Sainsburys, Camping and caravanning club, Brighthouse, Tesco, The Villagers, Supervision media, Papers4U | |

Most Recent Modelling Work (First Professional Job: September 1998)

| Year | Type and Company/Clients |
|--------------|---|
| 2011 | Photographic, Accent Fashion Accessories |
| 2008-2011 | Catwalk/Fashion shows, The Fashion Sale and Show company NW, CUFFS, Cambridge RAG |
| 2010-Present | Smooth, Real and Rock radio events crew. |
| 2009-2010 | Bar Staff and promotions team at 'Courtney's Bar', Bolton |
| 2007 | Work experience at Linder Myers Solicitors. |
| 2007-2008 | Music Teacher offering private tuition |
| 2006-2008 | Sales Team at 'Margaret White's Celebration Cakes': Involved in wedding fayres and various public sales events. |
| 2005-2007 | Office Assistant at 'The White Group Ltd': General Administration work, receptionist duties, working with spreadsheets. |

Education

| | |
|------------------|---|
| 2007-2010 | Homerton College, Cambridge University BA Hons Theology and Religious Studies. 2.1 obtained |
| 2000-2007 | Bolton School Girls' Division, Bolton A levels: 5 A's, GCSEs: 9A*s, 1A |

