

BETHANY K

Personal statement

I have worked in promotions for four years and I find it a very exciting industry to work within. I am a confident hard working individual good in a team or individually. I am to quick to learn and apply myself to any assignment with enthusiasm and commitment.

Statistics

Hair length – Long

Hair colour – Brunette/Red

Eye Colour – Blue

Dress Size – 8

Chest – 34B

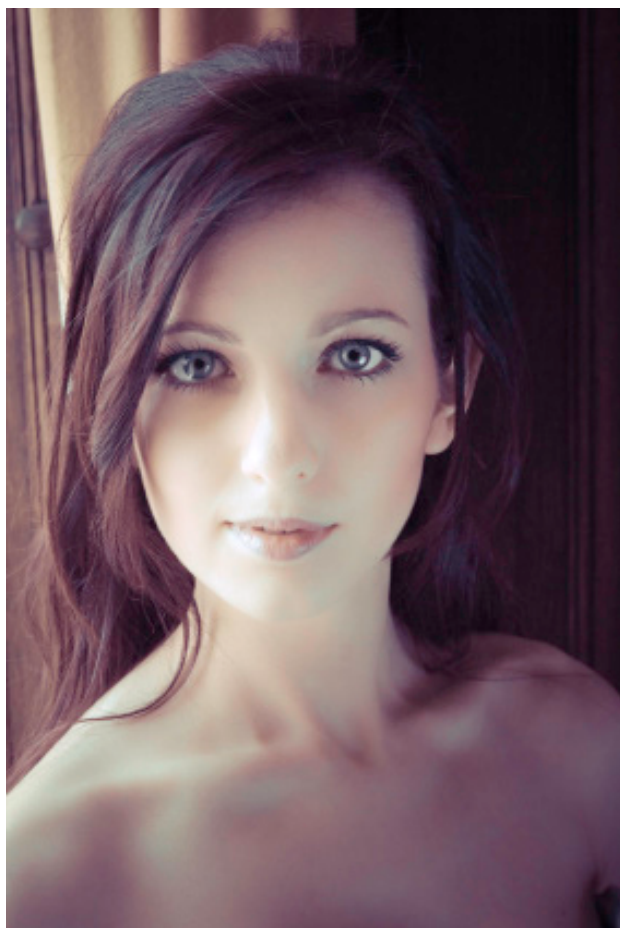
Build – Slim

Waist – 24”

Hips – 31”

Height – 5’5”

Shoe size – 6



Skills

- Exhibitions and Trade Shows Public and B2B,
- Excellent Approach, Invite ,Engage, Inform, Persuade, Retain, Introduce, Data Capture Skills
- Quickly learn any product and client brief and deliver .
- Product Sampling/Selling
- Demonstrator/Sales
- Corporate and Exhibition Hospitality
- Direct Product Sales
- Product /Service Launches and promotions
- Venue/Store Launches and Promotions
- Field Campaigns, Data Capture
- Experiential campaigns and promotions
- FMCG, Products and Services
- Targeted Sales Lead Generating/Appointment Making
- Brand awareness and leafleting campaigns and promotions
- P R and Publicity Campaigns

Continued page 2



Contact us today if you would like Bethany to represent your business

Work Experience

Data Capture

World Series Renault, 'Unlock the magic of Christmas' shopping centre campaign, Clothes Show Live.

Exhibitions and Conferences

Primary Education Show, Gadget Show Live, BBC Good Food Show, NUS Show, Dentistry Show, Clothes Show Live, Grand Designs Show, Lloyds Banking conference, Doctors Conference.

Sales

Superdrug pushing sales of fragrances, World series Renault cars, Solar King solar panels, MFI furniture, Lint Lindor chocolates.

Hospitality and Hostessing

World Series Renault, Lloyds TSB conferences, Maplins Party, Dentistry Show, VIP Hostess at the F1 Grand Prix.

Merchandising

On-going merchandising work for Coca-Cola at Alton Towers Park and Hotel.

Brand Ambassador

BA for clients including Coca-Cola, Lindor, Pizza Hut, Corona, MFI, Xbox.

Acting

Television extra in BBC Doctors involving a talking part, Film extra in Beyond the Pole.

Grid Girl

Renault Series, Le Mans Cup.

Modelling

Bridal and Fashion model, Johnny Loves Rosie accessories.

Education

Currently studying for a foundation degree in Design: Special effects Makeup.

A-levels completed in Fine Art, 3D Art and Media at grades C – B.

GCSE all passed at grade A* - C.

