

Personal statement

I have worked in the exhibition, promotional, modelling and television industries for the last five years.

I pride myself on having excellent communication, approach and engagement skills, and having an outgoing and approachable personality. I am punctual and have good time management skills.

I thrive in (and enjoy!) a busy environment.

I am committed, honest, reliable, enthusiastic and very quick to learn any brief and deliver!

Statistics

DOB - 08/01/1986

Hair - Mid Length Brunette

Eyes - Hazel

Dress Size - 10

Height - 5'9"

Waist - 26"

Hips - 36"

Inside Leg - 32"

Chest - 34C

Head Size - 22"

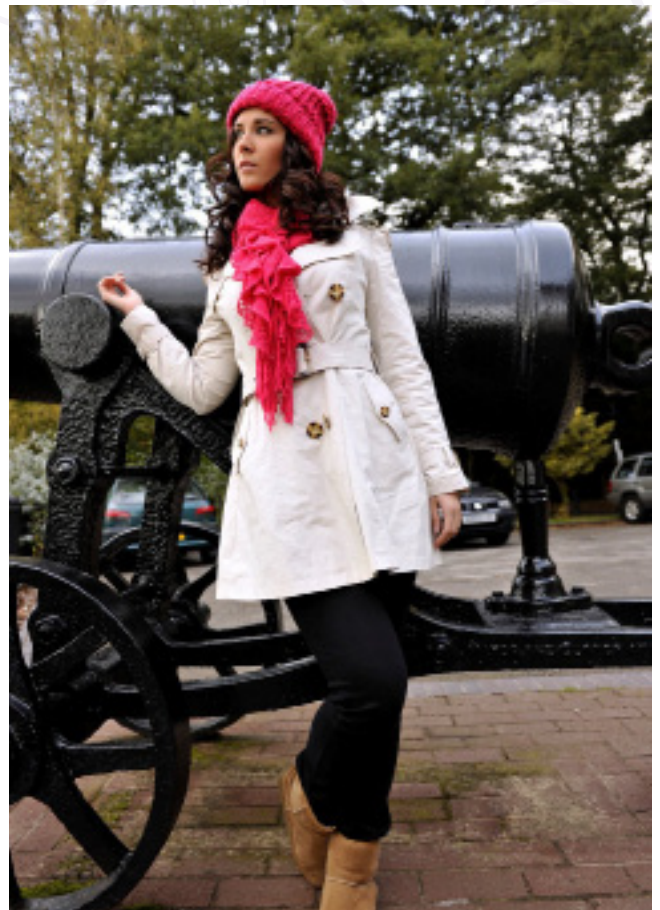
Neck - 14"

Shoe Size - 5

Skills

- Exhibitions and Trade Shows Public and B2B,
- Excellent Approach, Invite ,Engage, Inform, Persuade, Retain, Introduce, Data Capture Skills
- Quickly learn any product and client brief and deliver .
- Product Sampling/Selling
- Demonstrator/Sales
- Corporate and Exhibition Hospitality
- Direct Product Sales
- Product /Service Launches and promotions
- Venue/Store Launches and Promotions
- Field Campaigns, Data Capture
- Experiential campaigns and promotions
- FMCG, Products and Services
- Targeted Sales Lead Generating/Appointment Making
- Brand awareness and leafletting campaigns and promotions
- P R and Publicity Campaigns

Contact us today if you would like Amy to represent your business



Work Experience

Modelling...

Grid Modelling - Le Mans Series Staffordshire County Magazine - Christmas 2008 Glamour Magazine - Hair Modelling for Schwarzkopf Gliss Bridal Modelling - Crystal Breeze Dress Company - Moda Bridal Show, Birmingham
NEC And Harrogate International Bridal Show Regular Photographic - EL Norman Photographers - Staffordshire Photographic - Nuffield Plastic Surgery Website
Photographic and Website - TNT Parcels

Television Appearances...

Land girls - BBC
Coronation Street - ITV
Hollyoaks - Channel 4 Casualty - BBC
Shameless - Channel 4 - WPC Walk On Goldplated - Channel 4 Productions - Main Artist Double Doctors - BBC - Receptionist Walk On Doctor Who - BBC - Dancer
A Touch Of Frost - BBC - WPC Blue Murder - ITV - WPC
Corporate... Banker - Handy Cam Corp Video
Clubber - Door Supervisors Examination DVD - Two Plus Two Productions
Film Productions... Goal 3 - Footballers Wife/WAG - Shed productions A Boy Called Dad - WPC Professional Theatre...
Dancer - Shakespeare's The Taming Of The Shrew - Gatehouse Theatre Promotions...
Play.com
WKD Shots O2 Mobile Network Impulse Body Spray
Toyota
The National Lottery And Health Lottery
NEC Exhibitions - RMW8, RMW10/11 RAC10, HAV10, Clothes Show
Thomas Cook Holidays
Shredded Wheat
Thomas Sabo
Coors Light
Nintendo

Education

VT Training (City and Guilds)

Level 2 NVQ in Fitness Instructing (Gym)

British Red Cross

First aid At Work (2011-2014)

Safety Training Awards

Level 2 certificate in Pool Attendant (2010-2012)
Level 1 foundation certificate in Swimming Pool and Spa Water Treatment

London Academy of Music and Dramatic Art (LAMDA)

Bronze, Silver and Gold Medal Solo Acting

Fenton Sixth Form College

A Level Media Studies – C
A Level Performing Arts – C

AS Level Psychology – E
General Studies – E

